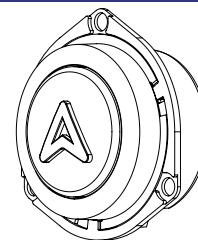


Pushbutton

Type US97-EN (waterproof to IP66 & IP67)



Publication Number **PB182/0608**

Application

The Dewhurst US97-EN button is designed to meet the requirements of EN81-70* and pr EN81-40/41 which requires the pushbutton legend to have a height of 15mm. It is also ideal for use in airports, shopping centres, train stations, platform lifts etc. where a palm operated button better meets the requirements of lift users.

Dewhurst illuminated legend pushbuttons ensure a bright wide angle view in all lighting conditions and includes in the range tactile buttons to aid the visually impaired. The US97-EN is ideal for use in all types of lifts and similar installations including those which may be exposed to heavy duty or vandalism.

The EN pressel range is available in three background colours; black for call, door open and door close buttons, yellow for alarm and green for exit floor button in the lift car.

Operation

Operation of the pressel activates a patented switch technology called Pushgate™*, a revolutionary magnet switch, having no parts that can fatigue. Illumination of the legend and halo is independent, so the legend can be permanently illuminated, with the halo illuminating for call acceptance or vice versa. Standard illumination is through long life LED's at 24V.

Installation

The pushbutton is securely held to the back of the faceplate by 3 off M4 x 16LG weldstuds, washers and nuts.

Dewhurst US97-EN pushbuttons can be supplied loose or incorporated into stations with 1.5mm or 2.5mm stainless steel faceplates, with a vertical pitch of 80mm and horizontal pitch of 90mm. If pushbuttons are supplied loose, spacers are provided to accommodate the differing faceplate thickness.

Technical details

Weight	75grms
Moulded in	High grade polycarbonate (flame retardant)
Environmental protection	IP66 and IP67
Pressel plate material	Anodised aluminium (black, green, yellow)
Pressel plate area	US97-EN = 804mm ²
Button force	7N
LED current	Legend/halo, 35mA/50mA (typical)
LED colours	White/red, white/green and white/yellow (legend/halo)
LED voltage	24V a.c./d.c. ± 15%

Designed to meet the requirements of BS CECC 96400: Pushbutton Switches where relevant, EN81-1/2, EN81-70*/EN81-71 Category 2, pr EN81-40 and pr EN81-41.

* Except for button force

Rating

30V d.c. at 50mA max. resistive loads - min. no. of operations: 5×10^6
 24V d.c. at 20mA max. resistive loads - min. no. of operations: 5×10^6
 12V d.c. at 5mA max. resistive loads - min. no. of operations: 5×10^6
 Power: 2.5 watts (max)
 Contact arrangements: 1N/O only

Marking

A range of legends in Helvetica Medium characters and symbols are available, please refer to our website. Tactile legends are formed during the moulding of the pressel body and are in opal 15mm high characters.

Pushgate™* technology is a patented design of

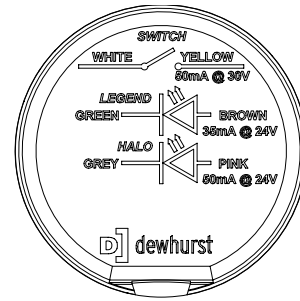
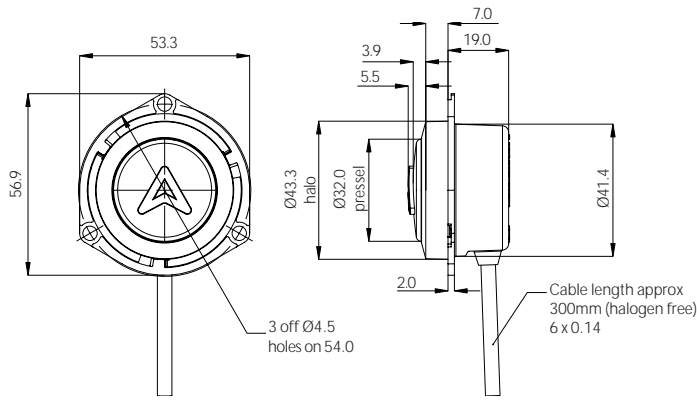


Patent Nos: US PAT nos. 5,523,730; 5,666,096; 5,867,082; 5,990,772; 6,130,593; 6,069,545; 6,023,213; 6,069,552; 6,137,387; 6,262,646 Chinese PAT no. ZL96110385.X Taiwanese PAT No. NI090979 Australian PAT No. 727962 UK Patent Pending.

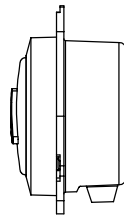
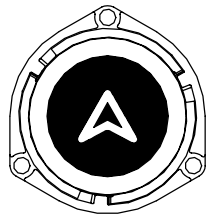
Dewhurst plc t +44 (0)20 8607 7300 f +44 (0)20 8572 5986 info@dewhurst.co.uk www.dewhurst.co.uk
 Contact your local sales office:

Australia	D Australian lift components	t 02 9603 0200	f 02 9603 2700	info@alc.au.com	www.alc.au.com
	D lift material	t 02 9310 4288	f 02 9698 4990	info@liftmaterial.com	www.liftmaterial.com
Canada	D dupar controls	t 519 624 2510	f 519 624 2524	info@dupar.com	www.dupar.com
UK	D LiftStore	t 020 8538 1770	f 020 8538 1771	info@liftstore.com	www.liftstore.com
USA	D the fixture company	t 847 214 3100	f 847 214 2771	info@thefixtureco.com	www.thefixtureco.com

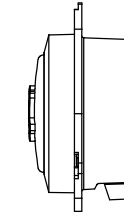
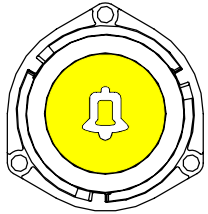
US97-EN Dimensions



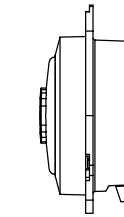
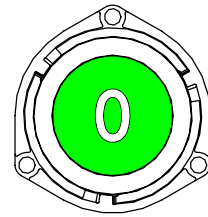
View of back of body showing wiring details



US97-EN

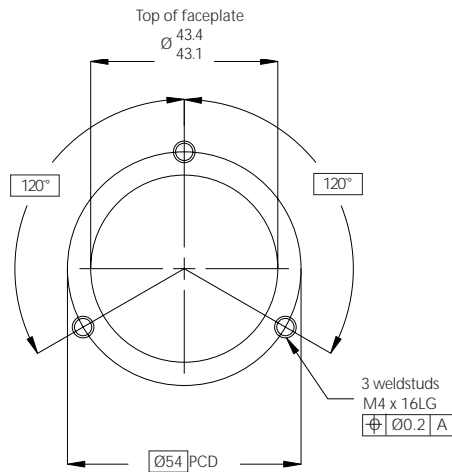


US97-EN (Alarm)



US97-EN (Exit Floor)

DETAILS FOR MOUNTING



Dewhurst plc t +44 (0)20 8607 7300 f +44 (0)20 8572 5986 info@dewhurst.co.uk www.dewhurst.co.uk
Contact your local sales office:

Australia	D Australian lift components	t 02 9603 0200	f 02 9603 2700	info@alc.au.com	www.alc.au.com
	D lift material	t 02 9310 4288	f 02 9698 4990	info@liftmaterial.com	www.liftmaterial.com
Canada	D dupar controls	t 519 624 2510	f 519 624 2524	info@dupar.com	www.dupar.com
UK	D LiftStore	t 020 8538 1770	f 020 8538 1771	info@liftstore.com	www.liftstore.com
USA	D the fixture company	t 847 214 3100	f 847 214 2771	info@thefixtureco.com	www.thefixtureco.com